



mcdougall farm community garden



1. native garden beds



2. solar panels



3. bbq, wood fired oven, seating area



4. propagation and seedling area



5. 4500l rain water tank



medougall farm community garden



6. fruit trees



7. entrance signage



8. raised timber beds (limestone block ends)



9. raised corrugated beds



10. compost bays & large scale worm farm

0m 5m 10m

notes
1. scale 1:150
2. approx 120m² of vege beds

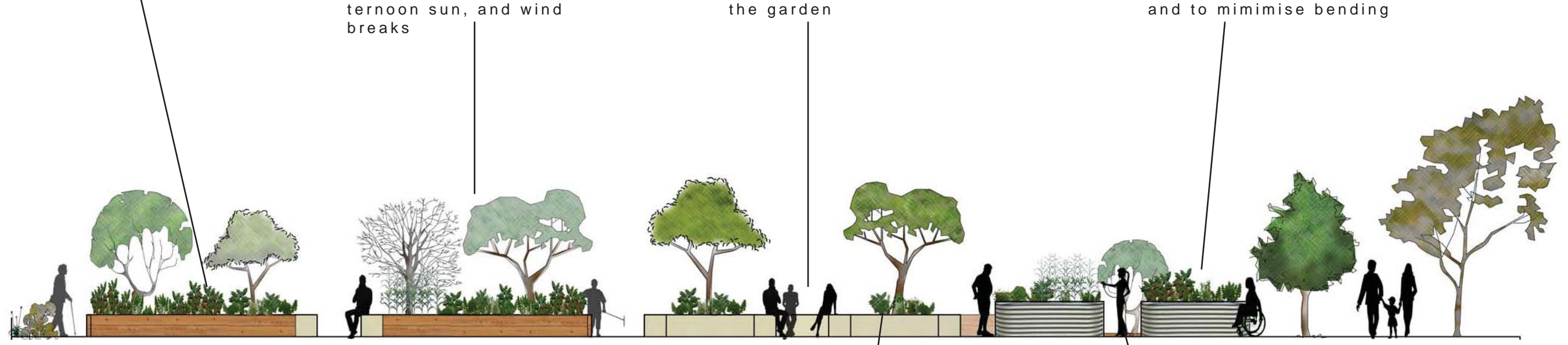
concept design

raised beds run north south for solar orientation

trees located to provide suitable microclimates through shading late afternoon sun, and wind breaks

limestone blocks used to 'cap' ends of raised beds and provide seating around the garden

raised corrugated beds located near main entrance for easy access, and to minimise bending



native gardens provide aesthetic, small / broken limestone blocks used throughout to provide visual interest

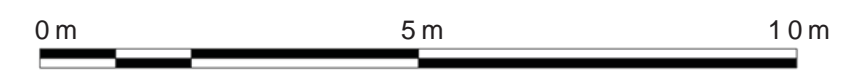
beds constructed with timber to 400mm high and 1500mm wide for easy accessibility

range of perennial herbs and plants grown under trees providing pollination, pest control, increased growing space and act as a 'living mulch' reducing evaporation

major paths 1.2m wide, with a minimum of 1m width paths next to beds for access, all lined with mulch



medougall farm community garden



notes
1. scale 1:100



sectional elevation - view east

30 fruit trees selected based on :
 - climatically suitable, and yield,
 - mix of varieties ensure fruit year round
 - a mixture of both popular fruit, and fruit not readily commercially available
 - mixture of deciduous and evergreens to create microclimates



compost bins - locate multiple compost bins around garden under fruit trees to provides nutrients to trees and compost waste



flowering plants - below fruit trees planting suitable yellow, purple and blue flowering plants to attract pollinators



integrated pest management - below fruit trees an understory of plants to provide habitat to beneficial insects to assist in natural pest control



perennial plantings - a mixture of perennials and herbs to be planted beneath and around fruit trees aid pollination and confuse insect pests



native habitat - native buffer gardens encourage nectar feeding and insectivorous birds, and other native fauna to reduce pest attacks



dynamic accumulators

plants that add mineral content to the soil once foliage or roots are added to compost

banana leaves
borage
comfrey
dandelion
fennel
garlic
marigold
mustard
onion
parsely
yarrow

fruit trees

acerola cherry (or barbados cherry)
avocado
banana
dwarf nectarine
dwarf peach
feijoa
fig - black genoa
finger lime
grapes
grapefruit - thompson
guava
guava - strawberry
kaffir lime
kumquat
lemon eureka
loquat
macadamia
mango - kensington
olive - kalamata
olive - manzanillo
pawpaw
pomegranate - wonderful
quince

perennial and herb listing

aloe vera*
basil*
bay tree
chives*
dill
fennel
garlic chives*
geranium - various*
goji berry*
lavendar
lemon balm
lemongrass*
lemon verbena*
lovage
marigold
marjoram*
mint - various*
nasturtian
oregano*
parsely
pepino*
perennial basil*
rosemary
rhubarb
sage
salvia - mixed
sweet potato*
strawberries
sugarcane*
tamarillo (tree tomato)
thyme
warrigal greens*
wormwood*

* can be supplied free via links with other community gardens and my own garden

suggested native plants

Adenanthos obovatus - 'basket flower'
Grevillea fasciculata - 'gingin gem'
Anigozanthos manglesii - 'kangaroo paw'
Leucophyta brownii - 'cushion bush'
Eremophla maculata - 'native fuscia'
glabra - 'tar bush'
Conostylus candicans - 'grey cottonhead'
Ficinea nodosa - 'knotted clubbrush'

materials list

pizza oven
bbq (free standing portable)

1 x water tank (4500L approx)
plus plumbing fixtures/pipes to connect to down pipe

- timber (jarrah sleepers, not treated pine) for raised vegetable beds
231 linear meters

- timber (jarrah sleepers, not treated pine) for raised tree beds
108.6 linear meters

-raised beds (corrugated)
4 x 1500mm x 2500mm x 800mm

- compost bins
6 x cone type compost bins (3 x 220L, 3 x 400L)
1 x tumbleweed 220L compost tumbler
1 x worm farm

- pergolas
shade cloth / sail to cover 25m²
16 x pergola posts (2700 x 90 x 90)
15m length of beams
8 x rafters
concrete for 16 posts
nails and coach bolts

- solar panels
1.5Kw panel set

- soil and amendments
10m³ soil
5m³ compost
5m³ mix of sheep & cow manure (90 %) and chicken manure (10%)

